

CYNTHIA D. MAHR  
ASSISTANT SUPERINTENDENT  
FOR FINANCE AND OPERATIONS

TO: John Brackett, Ed. D.  
Weston School Committee

FROM: Cynthia D. Mahr

DATE: October 5, 2015

RE: 2015-2016 Enrollment Report and Projections

---

The school year 2015-2016 enrollment report is divided into three sections. The first section provides the October 1 enrollment data in terms of historical information as well as actual versus projections. The second section provides class size data for the middle and high schools. The third section provides historical Weston birth data and census data on which enrollment projections for future years are based.

### **Section I: Enrollment and October 1 Data**

#### **Table A: K-12 Enrollment Report**

Overall, we are 39 students below our projection and 67 students below the October 1, 2014 count. The significant variances in the projection figures are apparent in Grades 1, 4, 5 and 10.

#### **Table B: K-12 Enrollment Report Distribution by Residency**

#### **Table C: Trend in Enrollment Distribution by Residency**

The majority of the students attending Weston schools are residents, 90.4%. In addition, there are 170 METCO students (7.9%) and 35 children of faculty and staff (1.6%). Over the last 11 years, Weston's enrollment has decreased by 180 students.

#### **Table D: October 1 Fluctuations from Projected Enrollments**

Accurate enrollment projections are challenging. The projection method used by Weston is a commonly used method of calculating the ratio of births to Kindergarten enrollments and grade-to-grade ratios over a period of time. The birth data source is the Massachusetts Department of Public Health. Table D summarizes the October 1 fluctuations to the projected enrollments. As previous tables have shown, the current year enrollment was less than projected by 39 students. The significant variances in the projection figures are apparent in Grades 1, 4, 5 and 10. Grade 1 is over-projected by 14 students, Grade 4 is over-projected by 7 students, Grade 5 is over-projected by 8 students and Grade 10 is under-projected by 7 students.

#### **Table E: Percentage of Weston Resident Children in Private School**

On an annual basis, this district must report to the Massachusetts Department of Elementary and Secondary Education (DESE) the school placement of Weston resident children. The report is

based on data as of January 1<sup>st</sup> of each year and is due to the DESE at the end of February. Working in conjunction with the Town Clerk, the Business Office matches the information in WPS's student information system with the returned census materials. The table outlines the data reported to the DESE for the past ten years.

This table does not include METCO, exchange or tuition students; it reflects the placement of Weston resident children based only on available information.

## **Section II: Middle and High School Class Size Review**

### **Table F: Course Sections Above 25 and Under 12 Students**

Based on a review of the Middle and High Schools course schedule as of October 2, 2015, Table F details courses with enrollments in excess of 25 students and courses with enrollments less than 12 students.

At the High School, there are zero (0) core courses but fifteen (15) electives with enrollment in excess of 25 students. Similar to past years' data, many of the music sections, such as concert band and chorus, are by the nature of the discipline, larger than the twenty-five student guideline cap. The High School has ten (10) core courses and five (5) electives with an enrollment under 12 students.

At the Middle School, there are zero (0) core courses and seventeen (17) electives with enrollment in excess of 25 students. The Middle School has one (1) core courses and eleven (11) electives with an enrollment of 12 students or less as indicated in Table F.

A column reflects the time of year the course is running:

All: Year round course

S1 or S2: Semester 1 or Semester 2

Q1, Q2, Q3, or Q4: Quarter 1, Quarter 2, Quarter 3, or Quarter 4

Due to the nature of smaller classes in special education and topic courses, these courses were not included in the analysis.

### **Table G: Middle School Section Size Distribution**

### **Table H: High School Section Size Distribution**

Tables G and H analyze the class size of the core subject areas in the High and Middle Schools.

Table G analyzes the section size distribution for the Middle School. The Middle School courses range from 10 to 24 students per section

Table H analyzes the section size distribution for the High School. English, Social Studies, Math and Science have similar ranges in both the number of sections and size of sections. These range from 9 to 25 students per section

The mean and median calculations are shown on both Table G and H. Table I provides a historical view of these calculations.

**Table I: Section Size Statistics for Certain Departments (Middle and High School)**

Table I provides the statistical data referred to in Tables G and H. The table provides historical class size ranges and mean and median calculations for the Middle and High Schools from school year 2006-2007 through the present. As the table indicates, the historical data has been consistent. Median values range from 17.5 to 21 over the past two years. The mean values range from 16.9 to 19.4 over the same time period.

**Section III: Enrollment Projections**

**Table J: Census and Birth Data**

Table J examines the various attributes contributing to the enrollment projection. The first chart is titled Census of Residents Age 0 – 5 as of January 1. This information is provided by the Town Clerk’s Office on an annual basis. Based on the census figures, the overall population of pre-Kindergarten aged children in Weston has generally declined over the past thirteen years (slight increase in 2008 and 2010).

The second table provides historical data on the total number of births by Weston residents from 1989 to the present as reported by the Massachusetts Department of Public Health (DPH).

**Table K: K-12 Enrollment History and Projections as of October 1, 2015**

Table K details the enrollment projection methodology. This spreadsheet calculates the ratio of Weston birth data to actual kindergarten enrollments from school year 1997-1998 through the present. The birth data is published annually by the Massachusetts Department of Public Health (DPH). Three ratios are then developed: 10-year, 5-year and 3-year for all grades based on average grade retention ratios. Below is a summary of the ratios:

Grade	10-Year Average Enrollment Ratio	5-Year Average Enrollment Ratio	3-Year Average Enrollment Ratio
K	1.62	1.80	1.72
1	1.07	1.06	1.05
2	1.04	1.04	1.04
3	1.03	1.01	1.00
4	1.01	1.02	1.02
5	1.02	1.03	1.02
6	0.99	0.99	0.98
7	1.00	0.99	0.98
8	1.01	1.02	1.02
9	0.98	0.99	0.98
10	0.98	0.97	0.97
11	0.99	0.98	0.96
12	1.00	1.00	1.00

Based on the quality of education provided by the Weston Public Schools, families are apt to move into town when their children reach school age. The 2016-2017 enrollment projections are based on the 3-year average ratio. Utilizing the straight ratio for Kindergarten would result in a projection of 103 students. This is a result of a lower than normal, although similar to the

previous year's birth rate of 59 in 2011. A revised estimate of 130 has been used in the 2016-2017 projection. This number represents the two-year average of Kindergarten class size. I feel this is a more accurate reflection of the expected Kindergarten enrollment for next year.

### **Summary**

In summary, the school year 2015-2016 enrollments reflect an overall decrease in the number of students attending Weston Public Schools of 39 students.

The school year 2016-2017 enrollment projection is 2,076 students in Kindergarten through Grade 12. This represents a decrease of 63 students from the October 1, 2015 count. I look forward to discussing this with you and providing additional information as needed. Thank you.

**RECOMMENDED ACTION:** That the Weston School Committee receive the 2015-2016 Enrollment Report and vote to adopt Table K: K-12 Enrollment History and Projection for the Fiscal Year 2017 budgeting purposes.

Attachments

K-12 Enrollment Report  
Based on October 1, 2015 Enrollments

Grade	2014-15 Actual	2015-16 Projected	2015-16 Actual as of October 1, 2015	Difference from Projection	% Difference from Projection	Projected Cohort Change	Actual Cohort Change	2015-16 Class Size Avg	Class Size Range	Class Size Target
K	139	132	127	(5)	-3.8%			18.1	17 - 21	19
1	126	152	138	(14)	-9.2%	13	(1)	17.3	17 - 21	19
2	175	131	131	0	0.0%	5	5	18.7	18 - 22	20
3	159	177	175	(2)	-1.1%	2	0	19.4	18 - 22	20
<b>Sub-total</b>	<b>599</b>	<b>592</b>	<b>571</b>	<b>(21)</b>	<b>-3.5%</b>					
4	162	163	156	(7)	-4.3%	4	(3)	19.5	20 - 24	22
5	174	168	160	(8)	-4.8%	6	(2)	20.0	20 - 24	22
<b>Sub-total</b>	<b>336</b>	<b>331</b>	<b>316</b>	<b>(15)</b>	<b>-4.5%</b>					
<b>K-5 Total</b>	<b>935</b>	<b>923</b>	<b>887</b>	<b>(36)</b>	<b>-3.9%</b>					
6	183	172	174	2	1.2%	(2)	0	21.8		
7	170	180	178	(2)	-1.1%	(3)	(5)	19.8		
8	214	174	173	(1)	-0.6%	4	3	21.6		
<b>MS Total</b>	<b>567</b>	<b>526</b>	<b>525</b>	<b>(1)</b>	<b>-0.2%</b>					
9	149	211	206	(5)	-2.4%	(3)	(8)			
10	190	142	149	7	4.9%	(7)	0			
11	190	186	181	(5)	-2.7%	(4)	(9)			
12	175	190	191	1	0.5%	0	1			
<b>HS Total</b>	<b>704</b>	<b>729</b>	<b>727</b>	<b>(2)</b>	<b>-0.3%</b>					
<b>Grade 6 - Grade 12 Total</b>	<b>1,271</b>	<b>1,255</b>	<b>1,252</b>	<b>(3)</b>	<b>-0.2%</b>					
<b>Grade K - Grade 12 Total</b>	<b>2,206</b>	<b>2,178</b>	<b>2,139</b>	<b>(39)</b>	<b>-1.8%</b>					

Elementary Breakout	K	1	2	3	Total
Country	72	72	56	95	295
Woodland	55	66	75	80	276
<b>Total</b>	<b>127</b>	<b>138</b>	<b>131</b>	<b>175</b>	<b>571</b>

**K-12 Enrollment Report**  
**Based on October 1, 2015 Enrollments**  
**Distribution by Residency**

Grade	2015-2016 Actual as of October 1, 2015	Residents	Exchange	Percent Residents and Exchange	METCO	Percent METCO	Children of Faculty & Staff	Percent Faculty & Staff
K	127	105	0	82.7%	16	12.6%	6	4.7%
1	138	122	0	88.4%	12	8.7%	4	2.9%
2	131	118	0	90.1%	12	9.2%	1	0.8%
3	175	155	0	88.6%	15	8.6%	5	2.9%
<b>Sub-total</b>	<b>571</b>	<b>500</b>	<b>0</b>	<b>87.6%</b>	<b>55</b>	<b>9.6%</b>	<b>16</b>	<b>2.8%</b>
4	156	142	0	91.0%	13	8.3%	1	0.6%
5	160	143	0	89.4%	13	8.1%	4	2.5%
<b>Sub-total</b>	<b>316</b>	<b>285</b>	<b>0</b>	<b>90.2%</b>	<b>26</b>	<b>8.2%</b>	<b>5</b>	<b>1.6%</b>
<b>K-5 Total</b>	<b>887</b>	<b>785</b>	<b>0</b>	<b>88.5%</b>	<b>81</b>	<b>9.1%</b>	<b>21</b>	<b>2.4%</b>
6	174	155	0	89.1%	13	7.5%	6	3.4%
7	178	162	0	91.0%	14	7.9%	2	1.1%
8	173	158	0	91.3%	13	7.5%	2	1.2%
<b>MS Total</b>	<b>525</b>	<b>475</b>	<b>0</b>	<b>90.5%</b>	<b>40</b>	<b>7.6%</b>	<b>10</b>	<b>1.9%</b>
9	206	194	0	94.2%	12	5.8%	0	0.0%
10	149	134	0	89.9%	14	9.4%	1	0.7%
11	181	168	0	92.8%	12	6.6%	1	0.6%
12	191	176	2	93.2%	11	5.8%	2	1.0%
<b>HS Total</b>	<b>727</b>	<b>672</b>	<b>2</b>	<b>92.7%</b>	<b>49</b>	<b>6.7%</b>	<b>4</b>	<b>0.6%</b>
<b>6-12 Total</b>	<b>1,252</b>	<b>1,147</b>	<b>2</b>	<b>91.8%</b>	<b>89</b>	<b>7.1%</b>	<b>14</b>	<b>1.1%</b>
<b>K-12 Total</b>	<b>2,139</b>	<b>1,932</b>	<b>2</b>	<b>90.4%</b>	<b>170</b>	<b>7.9%</b>	<b>35</b>	<b>1.6%</b>

Weston Public Schools  
Weston, Massachusetts

Enrollment Report  
Table C

Trend in Enrollment Distribution by Residency as of October 1, 2015

	Elementary Schools			Middle School			High School			Totals			Total Students
	Residents	Metco	Faculty & Staff Children	Residents	Metco	Faculty & Staff Children	Residents	Metco	Faculty & Staff Children	Total Residents	Total Metco	Faculty & Staff Children	
2004-05 #	974	89	14	521	28	11	613	42	27	2,108	159	52	2,319
%	90.4%	8.3%	1.3%	93.0%	5.0%	2.0%	89.9%	6.2%	4.0%	90.9%	6.9%	2.2%	
2005-06 #	969	89	12	501	29	13	624	41	21	2,094	159	46	2,299
%	90.6%	8.3%	1.1%	92.3%	5.3%	2.4%	91.0%	6.0%	3.1%	91.1%	6.9%	2.0%	
2006-07 #	981	96	13	503	31	11	652	40	18	2,136	167	42	2,345
%	90.0%	8.8%	1.2%	92.3%	5.7%	2.0%	91.8%	5.6%	2.5%	91.1%	7.1%	1.8%	
2007-08 #	956	88	14	532	43	8	669	35	18	2,157	166	40	2,363
%	90.4%	8.3%	1.3%	91.3%	7.4%	1.4%	92.7%	4.8%	2.5%	91.3%	7.0%	1.7%	
2008-09 #	954	87	11	535	45	6	663	33	15	2,152	165	32	2,349
%	90.7%	8.3%	1.0%	91.3%	7.7%	1.0%	93.2%	4.6%	2.1%	91.6%	7.0%	1.4%	
2009-10 #	899	87	16	569	43	6	663	37	12	2,131	167	34	2,332
%	89.7%	8.7%	1.6%	92.1%	7.0%	1.0%	93.1%	5.2%	1.7%	91.4%	7.2%	1.5%	
2010-11 #	887	87	17	534	37	5	680	50	15	2,101	174	37	2,312
%	89.5%	8.8%	1.7%	92.7%	6.4%	0.9%	91.3%	6.7%	2.0%	90.9%	7.5%	1.6%	
2011-12 #	885	83	25	511	41	4	688	54	11	2,084	178	40	2,302
%	89.1%	8.4%	2.5%	91.9%	7.4%	0.7%	91.4%	7.2%	1.5%	90.5%	7.7%	1.7%	
2012-13 #	876	85	20	514	42	3	720	54	6	2,110	181	29	2,320
%	89.3%	8.7%	2.0%	91.9%	7.5%	0.5%	92.3%	6.9%	0.8%	90.9%	7.8%	1.3%	
2013-14 #	871	84	19	489	39	5	711	56	7	2,071	179	31	2,281
%	89.4%	8.6%	2.0%	91.7%	7.3%	0.9%	91.9%	7.2%	0.9%	90.8%	7.8%	1.4%	
2014-15 #	835	80	20	523	39	5	647	51	6	2,005	170	31	2,206
%	89.3%	8.6%	2.1%	92.2%	6.9%	0.9%	91.9%	7.2%	0.9%	90.9%	7.7%	1.4%	
2015-16 #	785	81	21	475	40	10	672	49	6	1,932	170	37	2,139
%	88.5%	9.1%	2.4%	90.5%	7.6%	1.9%	92.4%	6.7%	0.8%	90.3%	7.9%	1.7%	

Weston Public Schools  
Weston, Massachusetts

Enrollment Report  
Table D

October 1 Fluctuations From Projected Enrollments

GRADE	1989 1990 1991 1992 1993 1994 1995 1996 1997 1998 1999 2000 2001 2002 2003 2004 2005 2006 2007 2008 2009 2010 2011 2012 2013 2014 2015																									Mean Diff (Regardless of Sign)	Years Over	Years Even	Years Under		
	1989	1990	1991	1992	1993	1994	1995	1996	1997	1998	1999	2000	2001	2002	2003	2004	2005	2006	2007	2008	2009	2010	2011	2012	2013					2014	2015
<b>K</b>	(21)	(11)	46	(2)	(6)	16	(27)	0	1	(2)	8	(3)	(9)	(30)	(17)	16	(5)	20	(17)	22	(19)	13	7	13	(22)	5	(5)	<b>13.4</b>	<b>11</b>	<b>1</b>	<b>15</b>
<b>1</b>	9	7	0	17	0	2	(1)	(8)	(3)	1	1	1	1	(5)	6	(3)	0	0	4	3	1	(10)	(9)	9	4	(10)	(14)	<b>4.8</b>	<b>14</b>	<b>4</b>	<b>9</b>
<b>2</b>	(3)	(2)	18	(1)	(8)	(6)	(4)	2	15	9	(10)	(3)	(12)	(1)	14	1	8	(5)	(5)	0	(3)	16	(12)	2	(1)	(5)	0	<b>6.1</b>	<b>8</b>	<b>2</b>	<b>17</b>
<b>3</b>	6	6	13	(4)	2	(11)	(6)	1	10	(1)	0	(3)	(4)	(17)	2	1	3	12	6	1	(8)	(13)	12	3	0	(11)	(2)	<b>5.9</b>	<b>14</b>	<b>2</b>	<b>11</b>
<b>4</b>	(6)	3	6	0	(8)	(2)	2	(1)	12	(4)	0	1	(5)	1	(1)	(9)	1	(4)	4	(6)	2	2	(8)	(5)	2	4	(7)	<b>3.9</b>	<b>12</b>	<b>2</b>	<b>13</b>
<b>5</b>	(3)	2	6	(3)	(3)	2	1	(1)	3	2	3	(2)	(5)	1	1	(6)	(3)	7	6	(10)	(6)	(5)	8	6	0	1	(8)	<b>3.9</b>	<b>14</b>	<b>1</b>	<b>12</b>
<b>K - 5</b>	<b>(18)</b>	<b>5</b>	<b>89</b>	<b>7</b>	<b>(23)</b>	<b>1</b>	<b>(35)</b>	<b>(7)</b>	<b>38</b>	<b>5</b>	<b>2</b>	<b>(9)</b>	<b>(34)</b>	<b>(51)</b>	<b>5</b>	<b>0</b>	<b>4</b>	<b>30</b>	<b>(2)</b>	<b>10</b>	<b>(33)</b>	<b>3</b>	<b>(2)</b>	<b>28</b>	<b>(17)</b>	<b>(16)</b>	<b>(36)</b>	<b>18.9</b>	<b>13</b>	<b>1</b>	<b>13</b>
<b>6</b>	(1)	(5)	2	4	(8)	3	1	(1)	(3)	(1)	(3)	2	(4)	(3)	(7)	2	10	(1)	5	(6)	3	(8)	(15)	9	(2)	(8)	2	<b>4.4</b>	<b>11</b>	<b>0</b>	<b>16</b>
<b>7</b>	(5)	0	5	(11)	5	10	0	(5)	3	(6)	(5)	(3)	(5)	5	1	1	(8)	9	4	(3)	(2)	9	(5)	(8)	(7)	2	(2)	<b>4.8</b>	<b>11</b>	<b>2</b>	<b>14</b>
<b>8</b>	(6)	0	2	5	1	0	1	0	4	3	(1)	1	(7)	5	2	(6)	2	(3)	2	(1)	11	(2)	5	1	3	3	(1)	<b>2.9</b>	<b>16</b>	<b>3</b>	<b>8</b>
<b>6 - 8</b>	<b>(12)</b>	<b>(5)</b>	<b>9</b>	<b>(2)</b>	<b>(2)</b>	<b>13</b>	<b>2</b>	<b>(6)</b>	<b>4</b>	<b>(4)</b>	<b>(9)</b>	<b>0</b>	<b>(16)</b>	<b>7</b>	<b>(4)</b>	<b>(3)</b>	<b>4</b>	<b>5</b>	<b>11</b>	<b>(10)</b>	<b>12</b>	<b>(1)</b>	<b>(15)</b>	<b>2</b>	<b>(6)</b>	<b>(3)</b>	<b>(1)</b>	<b>6.3</b>	<b>10</b>	<b>1</b>	<b>16</b>
<b>9</b>	(7)	1	6	5	(3)	6	(2)	(12)	(19)	(8)	20	0	1	(2)	(2)	(4)	(3)	12	12	(7)	(1)	5	14	2	3	(9)	(5)	<b>6.3</b>	<b>12</b>	<b>1</b>	<b>14</b>
<b>10</b>	(2)	6	6	(5)	(5)	0	(7)	0	9	3	(5)	3	(5)	6	(7)	1	9	(1)	3	(2)	(3)	(5)	8	(4)	(7)	3	7	<b>4.5</b>	<b>12</b>	<b>2</b>	<b>13</b>
<b>11</b>	(2)	7	0	(2)	(2)	10	1	1	(11)	(2)	6	1	(3)	(4)	(4)	4	(4)	2	5	(4)	(1)	8	2	1	(15)	(3)	(5)	<b>4.1</b>	<b>12</b>	<b>1</b>	<b>14</b>
<b>12</b>	3	2	(3)	(4)	1	5	(3)	(2)	(1)	2	(5)	5	7	2	(1)	(1)	0	3	0	(3)	(3)	(2)	0	4	1	3	1	<b>2.5</b>	<b>13</b>	<b>2</b>	<b>12</b>
<b>9 - 12</b>	<b>(8)</b>	<b>16</b>	<b>9</b>	<b>(6)</b>	<b>(9)</b>	<b>21</b>	<b>(11)</b>	<b>(13)</b>	<b>(22)</b>	<b>(5)</b>	<b>16</b>	<b>9</b>	<b>0</b>	<b>2</b>	<b>(14)</b>	<b>0</b>	<b>2</b>	<b>16</b>	<b>20</b>	<b>(16)</b>	<b>(8)</b>	<b>6</b>	<b>24</b>	<b>3</b>	<b>(18)</b>	<b>(6)</b>	<b>(2)</b>	<b>10.4</b>	<b>12</b>	<b>2</b>	<b>13</b>
<b>K - 12</b>	<b>(38)</b>	<b>16</b>	<b>107</b>	<b>(1)</b>	<b>(34)</b>	<b>35</b>	<b>(44)</b>	<b>(26)</b>	<b>20</b>	<b>(4)</b>	<b>9</b>	<b>0</b>	<b>(50)</b>	<b>(42)</b>	<b>(13)</b>	<b>(3)</b>	<b>10</b>	<b>51</b>	<b>29</b>	<b>(16)</b>	<b>(29)</b>	<b>8</b>	<b>7</b>	<b>33</b>	<b>(41)</b>	<b>(25)</b>	<b>(39)</b>	<b>27.1</b>	<b>11</b>	<b>1</b>	<b>15</b>

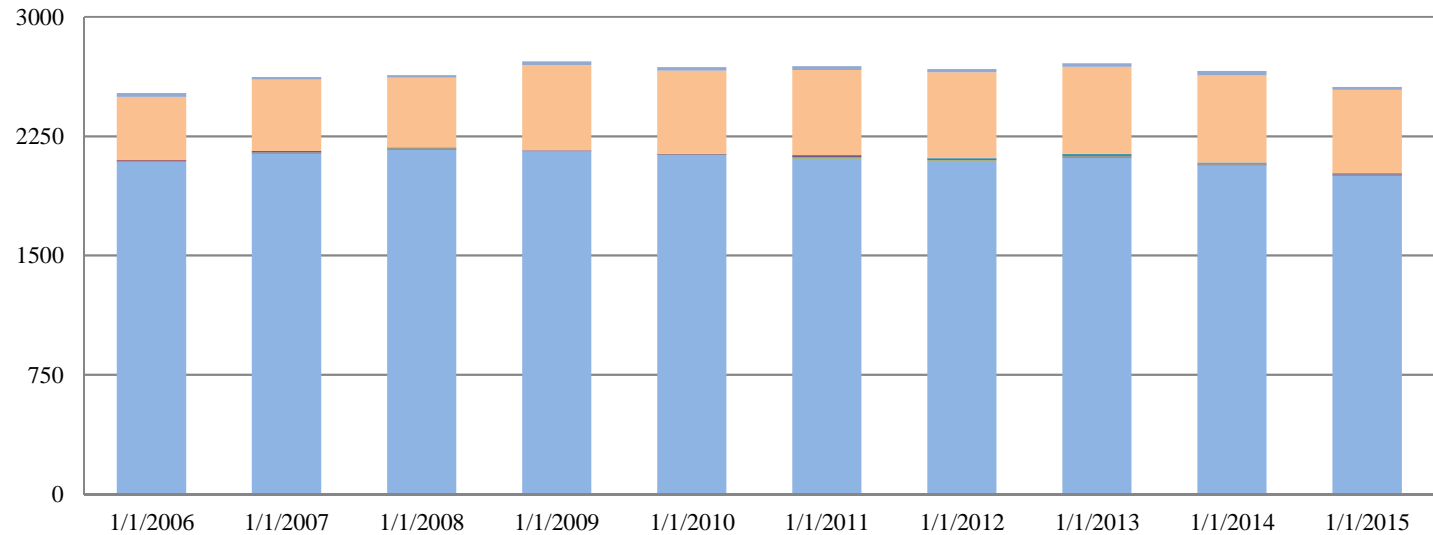
Negative numbers represent the actual enrollment was under the projected enrollment figures

Positive numbers represent the actual enrollment was over the projected enrollment figures



Weston School Age Children  
School Placement

Type of Schools	1/1/2006	1/1/2007	1/1/2008	1/1/2009	1/1/2010	1/1/2011	1/1/2012	1/1/2013	1/1/2014	1/1/2015
Weston Public Schools	2091	2141	2165	2151	2132	2109	2094	2115	2066	2001
Vocational	7	3	3	2	1	0	3	3	4	4
Collaboratives	0	3	4	3	2	8	4	5	2	3
Out of District Public	3	10	7	5	3	13	8	8	4	5
Home Schooled	0	0	0	0	0	1	5	7	9	5
In State Private / Parochial	396	448	438	535	524	534	537	548	546	522
Out of State Private / Parochial	23	16	16	23	21	25	20	22	29	18
% in Private and Parochial	16.63%	17.70%	17.24%	20.52%	20.31%	20.78%	20.85%	21.05%	21.62%	21.11%



	1/1/2006	1/1/2007	1/1/2008	1/1/2009	1/1/2010	1/1/2011	1/1/2012	1/1/2013	1/1/2014	1/1/2015
Out of State Private / Parochial	23	16	16	23	21	25	20	22	29	18
In State Private / Parochial	396	448	438	535	524	534	537	548	546	522
Home Schooled	0	0	0	0	0	1	5	7	9	5
Out of District Public	3	10	7	5	3	13	8	8	4	5
Collaboratives	0	3	4	3	2	8	4	5	2	3
Vocational	7	3	3	2	1	0	3	3	4	4
Weston Public Schools	2091	2141	2165	2151	2132	2109	2094	2115	2066	2001

The figures above do not include exchange, METCO or tuitioned in students.

Course Sections Above 25 and Under 12 in Size

Classes Over 25 as of October 2, 2015

Core Courses

HS

Electives

HS	770CY-7013	Conert Band	(1 of 1)	52	All	52.00
	772CY-5015	Wind Ensemble	(1 of 1)	55	All	55.00
	774CY-4012	Concert Orch	(1 of 1)	26	All	26.00
	780CY-1012	Chorus	(1 of 3)	28	All	30.67
	780CY-2013	Chorus	(1 of 3)	31	All	30.67
	780CY-7013	Chorus	(1 of 3)	33	All	30.67
	781CY-3015	Concert Choir	(1 of 1)	40	All	40.00
	920CS-4115	Phys Ed 10	(1 of 7)	26	All	21.43
	920CS-8112	Phys Ed 10	(1 of 7)	27	All	21.43
	930CS-1315	Phys Ed 11	(1 of 8)	26	Q3/4	22.88
	930CS-3313	Phys Ed 11	(1 of 8)	27	Q3/4	22.88
	930CS-3325	Phys Ed 11	(1 of 8)	27	Q3/4	22.88
	940CS-1115	Phys Ed 12	(1 of 8)	27	Q1/2	23.75
	940CS-6113	Phys Ed 12	(1 of 8)	27	Q1/2	23.75
	940CS-8115	Phys Ed 12	(1 of 8)	27	Q1/2	23.75

Classes Over 25 as of October 2, 2015

Core Courses

MS

Electives

MS	900-1	Madrigals	(1 of 1)	43	All	43.00
	901-1	Chorus 6	(1 of 1)	61	All	61.00
	902-1	Chorus 8	(1 of 1)	54	All	54.00
	903-1	Chorus 7	(1 of 1)	49	All	49.00
	904-1	Band 8	(1 of 1)	45	All	45.00
	905-1	Band 7	(1 of 1)	41	All	41.00
	907-1	Orch 7/8	(1 of 1)	60	All	60.00
	908-1	Band 6	(1 of 1)	49	All	49.00
	909-1	Str Orch 6	(1 of 1)	30	All	30.00
	760-7	PE 6	(1 of 9)	28	All	19.56
	761-5	Health 6	(1 of 8)	26	All	21.75
	770-1	PE 7	(1 of 10)	26	All	18.40
	770-3	PE 7	(1 of 10)	26	All	18.40
	770-8	PE 7	(1 of 10)	26	All	18.40
	780-6	PE 8	(1 of 8)	30	All	21.38
	780-7	PE 8	(1 of 8)	29	All	21.38
	780-8	PE 8	(1 of 8)	31	All	21.38

Classes Under 12 as of October 2, 2015

Core Course

HS	130CY-5010	Amer Lit	(1 of 7)	11	All	15.86
	230CY-3010	US History	(1 of 4)	11	All	14.00
	610CY-2010	Fren Nov I/II	(1 of 1)	9	All	9.00
	612CY-1010	Fren Int I	(1 of 2)	11	All	14.00
	615AY-6010	AP French	(1 of 1)	9	All	9.00
	625AY-4010	AP Spanish Lit	(1 of 1)	11	All	11.00
	644HY-1010	H Man V	(1 of 1)	10	All	10.00
	790AY-6010	AP Music Theory	(1 of 1)	10	All	10.00
	443CY-5010	DNA/Bio	(1 of 2)	10	All	10.50
	443CY-6010	DNA/Bio	(1 of 2)	11	All	10.50

Electives

HS	701CS-8111	Art II/III/IV	(1 of 2)	9	Q1/2	10.50
	721CS-1115	Clay II/III	(1 of 4)	11	Q1/2	15.00
	731CS-7111	Photo II/III	(1 of 3)	11	Q1/2	13.33
	931CS-6125	Junior Health	(1 of 11)	10	Q1/2	16.64
	931CS-8114	Junior Health	(1 of 11)	9	Q1/2	16.64

Classes Under 12 as of October 2, 2015

Core Courses

MS	186-1	Discrete Math	(1 of 1)	11	All	11.00
----	-------	---------------	----------	----	-----	-------

Electives

MS	884-1	Des/Con 8	(1 of 4)	11	Q1	14.50
	760-2	PE 6	(1 of 9)	9	All	19.56
	770-2	PE 7	(1 of 10)	11	All	18.40
	770-4	PE 7	(1 of 10)	10	All	18.40
	770-10	PE 7	(1 of 10)	11	All	18.40
	771-1	Health 7	(1 of 12)	11	All	14.83
	771-6	Health 7	(1 of 12)	10	All	14.83
	771-7	Health 7	(1 of 12)	10	All	14.83
	771-10	Health 7	(1 of 12)	11	All	14.83
	881-4	Vid Prod 8	(1 of 6)	11	Q4	16.83
	893-1	Music Theory	(1 of 2)	9	Q3	15.50

Weston Middle School Section Size Distribution  
Based on October 1, 2015 Enrollments

Department	Section Size	6	7	8	9	10	11	12	13	14	15	16	17	18	19	20	21	22	23	24	25	26	27	28	29	30
MS English	1																									
Mean: 20.79	2																									
	3																									
	4																									
	5																									
	6																									
	7																									
	8																									
MS Social Studies	1																									
Mean: 20.84	2																									
	3																									
	4																									
	5																									
	6																									
MS Mathematics	1																									
Mean: 19.11	2																									
	3																									
	4																									
	5																									
	6																									
	7																									
MS Science	1																									
Mean: 20.88	2																									
	3																									
	4																									
	5																									
	6																									
	7																									
	8																									
MS World Lang	1																									
Mean: 18.32	2																									
	3																									
	4																									
	5																									
	6																									
Median																										

Weston High School Section Size Distribution  
Based on October 1, 2015 Enrollments

Department	No. of Sections	1	2	3	4	5	6	7	8	9	10	11	12	13	14	15	16	17	18	19	20	21	22	23	24	25	26	27	28
HS English	1																												
Mean: 18.39	2																												
	3																												
	4																												
	5																												
	6																												
	7																												
	8																												
	9																												
	10																												
	11																												
HS Social Studies	1																												
Mean: 19.18	2																												
	3																												
	4																												
	5																												
	6																												
	7																												
	8																												
	9																												
	10																												
HS Mathematics	1																												
Mean: 19.02	2																												
	3																												
	4																												
	5																												
	6																												
	7																												
	8																												
	9																												
	10																												
HS Science	1																												
Mean: 19.27	2																												
	3																												
	4																												
	5																												
	6																												
	7																												
	8																												
	9																												
	10																												
HS World Languages	1																												
Mean: 16.92	2																												
	3																												
	4																												
	5																												
	6																												
	7																												
Median																													

Section Size Statistics for Certain Departments  
Middle School and High School

Based on October 1, 2015 Enrollments

	06-07 Range	06-07 Median	06-07 Mean	07-08 Range	07-08 Median	07-08 Mean	08-09 Range	08-09 Median	08-09 Mean	09-10 Range	09-10 Median	09-10 Mean	10-11 Range	10-11 Median	10-11 Mean
<b>Middle School:</b>															
English	16 to 25	21	21.7	17 to 25	23	22.1	17 to 25	21	21.3	15 to 24	22	20.9	15 to 24	21	20.4
Social Studies	16 to 26	21	21.7	15 to 25	22	22.0	16 to 26	22	21.4	17 to 24	21	21.1	16 to 24	20	20.2
Mathematics	15 to 26	19	20.6	14 to 24	22	21.2	11 to 26	20	20.1	15 to 24	20	20.4	11 to 24	21	19.7
World Language	8 to 25	21	17.5	10 to 28	17	18.1	9 to 27	20	19.7	12 to 25	19	19.1	10 to 27	20	18.3
Science	16 to 24	21	21.7	20 to 25	22	22.4	17 to 25	22	21.6	14 to 28	22	21.2	15 to 25	20	20.5

	06-07 Range	06-07 Median	06-07 Mean	07-08 Range	07-08 Median	07-08 Mean	08-09 Range	08-09 Median	08-09 Mean	09-10 Range	09-10 Median	09-10 Mean	10-11 Range	10-11 Median	10-11 Mean
<b>High School:</b>															
English	10 to 25	21	20.3	13 to 25	22	21.1	8 to 25	22	20.6	13 to 24	20	20.2	11 to 24	20	19.6
Social Studies	10 to 25	21	20.8	11 to 25	22	20.8	9 to 26	21	19.8	13 to 25	21	20.6	11 to 24	21	20.9
Mathematics	5 to 25	19	18.5	10 to 25	20	19.3	10 to 25	20	18.9	12 to 24	19	18.6	11 to 25	20	19.6
World Languages	8 to 25	20	18.6	10 to 27	20	19.2	9 to 26	19	18.4	11 to 24	19	18.2	11 to 24	18	18.6
Science	11 to 24	21	20.7	11 to 25	21	20.6	12 to 25	20	20.1	13 to 24	21	19.4	14 to 24	19	19.5

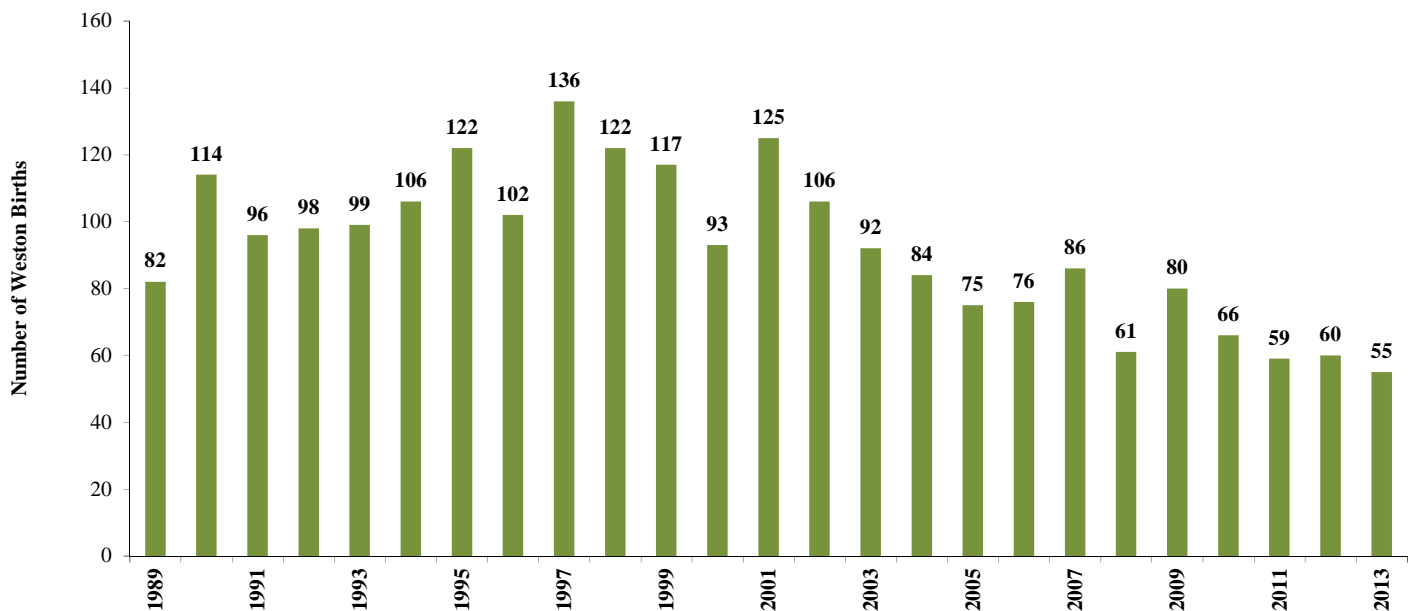
	11-12 Range	11-12 Median	11-12 Mean	12-13 Range	12-13 Median	12-13 Mean	13-14 Range	13-14 Median	13-14 Mean	14-15 Range	14-15 Median	14-15 Mean	15-16 Range	15-16 Median	15-16 Mean
<b>Middle School:</b>															
English	12 to 24	20	19.2	13 to 24	21	20.9	12 to 26	21	19.9	15 to 25	21	20.9	15 to 24	21	20.8
Social Studies	14 to 25	20	19.7	13 to 24	22	20.7	11 to 25	22	20.5	15 to 26	23	21.8	16 to 24	21	20.8
Mathematics	10 to 25	20	19.0	13 to 26	20	19.8	11 to 28	21	19.7	15 to 29	20	20.1	10 to 24	20	19.1
World Language	12 to 23	18	17.2	10 to 25	20	18.5	8 to 24	20	18.5	12 to 24	19	17.9	13 to 23	19	18.3
Science	14 to 24	19.5	19.8	15 to 24	22	20.7	12 to 24	22	20.5	15 to 25	23	21.6	16 to 24	21	20.9

	11-12 Range	11-12 Median	11-12 Mean	12-13 Range	12-13 Median	12-13 Mean	13-14 Range	13-14 Median	13-14 Mean	14-15 Range	14-15 Median	14-15 Mean	15-16 Range	15-16 Median	15-16 Mean
<b>High School:</b>															
English	13 to 24	22	20.9	15 to 24	22	20.8	10 to 24	21	20.5	11 to 24	19	18.8	11 to 24	18	18.4
Social Studies	11 to 24	22	20.7	10 to 24	22	20.7	10 to 25	23	20.9	10 to 24	17	16.9	11 to 24	19	19.2
Mathematics	9 to 26	19	18.9	13 to 26	20	20	11 to 25	22	20.8	8 to 25	17.5	18.0	12 to 25	19	19.0
World Languages	9 to 26	19	18.2	7 to 30	19	18.7	8 to 24	19	17.8	10 to 24	19	18.3	9 to 24	17.5	16.9
Science	11 to 24	21	20.1	13 to 24	20	20.2	10 to 24	22	20.8	11 to 24	20	19.4	10 to 24	21	19.3

Census of Residents Age 0 - 5 as of January 1  
Source: Weston Town Clerk's Office

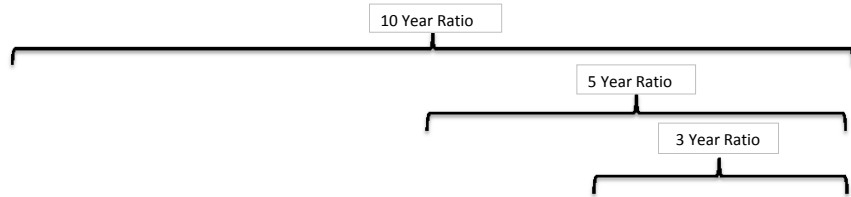
BIRTH YEAR	1998	1999	2000	2001	2002	2003	2004	2005	2006	2007	2008	2009	2010	2011	2012	2013	2014	2015
1992																		
1993	160																	
1994	135	153																
1995	144	152	173															
1996	113	121	145	156														
1997	133	144	157	187	187													
1998		119	141	163	170	177												
1999			119	135	143	145	161											
2000				100	105	117	119	138										
2001					121	127	140	157	166									
2002						98	106	116	132	129								
2003							90	98	111	119	139							
2004								92	103	104	126	131						
2005									68	77	101	106	126					
2006										67	90	98	120	133				
2007											76	97	112	126	134			
2008												55	77	88	93	102		
2009													78	81	90	102	104	
2010														67	79	89	93	107
2011															69	85	89	98
2012																66	77	94
2013																	59	65
2014																		59
<b>TOTALS</b>	685	689	735	741	726	664	616	601	580	496	532	487	513	495	465	444	422	423

Historical Weston Birth Data (1989 - 2013)  
Source: Mass. Department of Public Health



**Weston Public Schools**  
Enrollment History (1997-1998 to 2015-2016) and Projection (2016-2017 to 2026-2027)

**Enrollment Report**  
**Table K**



Year	1992	1993	1994	1995	1996	1997	1998	1999	2000	2001	2002	2003	2004	2005	2006	2007	2008	2009	2010	10 Year	5 Year	3 Year
Weston Birth Data	98	99	106	122	102	136	122	117	106	125	106	92	84	75	76	86	61	80	66	Average	Average	Average
School Year	1997/98	1998/99	1999/00	2000/01	2001/02	2002/03	2003/04	2004/05	2005/06	2006/07	2007/08	2008/09	2009/10	2010/11	2011/12	2012/13	2013/14	2014/15	2015/16	Ratios	Ratio	Ratio
Grade K	167	168	177	172	181	160	166	167	138	171	141	155	137	138	137	154	124	139	127			
Grade K: Birth Data		1.697	1.670	1.410	1.775	1.176	1.361	1.427	1.484	1.368	1.330	1.685	1.631	1.840	1.803	1.791	2.033	1.738	1.924	1.62	1.80	1.72
Grade 1	166	176	177	186	181	185	173	172	175	146	183	156	167	150	143	156	172	126	138			
Grade 1: Grade K		1.054	1.054	1.051	1.052	1.022	1.081	1.036	1.048	1.058	1.070	1.106	1.077	1.095	1.036	1.139	1.117	1.016	0.993	1.07	1.06	1.05
Grade 2	177	181	177	183	182	184	201	180	187	180	151	188	159	180	155	151	164	175	131			
Grade 2: Grade 1		1.090	1.006	1.034	0.978	1.017	1.086	1.040	1.087	1.029	1.034	1.027	1.019	1.078	1.033	1.056	1.051	1.017	1.040	1.04	1.04	1.04
Grade 3	188	184	189	183	187	171	188	203	183	200	191	163	190	160	187	161	155	159	175			
Grade 3: Grade 2		1.040	1.044	1.034	1.022	0.940	1.022	1.010	1.017	1.070	1.061	1.079	1.011	1.006	1.039	1.039	1.026	0.970	1.000	1.03	1.01	1.00
Grade 4	180	190	191	197	185	193	175	184	206	181	204	189	165	198	165	187	167	162	156			
Grade 4: Grade 3		1.011	1.038	1.042	1.011	1.032	1.023	0.979	1.015	0.989	1.020	0.990	1.012	1.042	1.031	1.000	1.037	1.045	0.981	1.01	1.02	1.02
Grade 5	178	184	196	193	196	188	196	171	181	212	188	201	184	165	206	172	192	174	160			
Grade 5: Grade 4		1.022	1.032	1.010	0.995	1.016	1.016	0.977	0.984	1.029	1.039	0.985	0.974	1.000	1.040	1.042	1.027	1.042	0.988	1.02	1.03	1.02
Grade 6	185	179	183	198	190	192	179	194	177	179	216	186	205	182	157	213	169	183	174			
Grade 6: Grade 5		1.006	0.995	1.010	0.984	0.980	0.952	0.990	1.035	0.989	1.019	0.989	1.020	0.989	0.952	1.034	0.983	0.953	1.000	0.99	0.99	0.98
Grade 7	137	185	177	181	193	193	192	179	186	183	183	217	186	208	190	152	208	170	178			
Grade 7: Grade 6		1.000	0.989	0.989	0.975	1.016	1.000	1.000	0.959	1.034	1.022	1.005	1.000	1.015	1.044	0.968	0.977	1.006	0.973	1.00	0.99	0.98
Grade 8	133	140	185	179	176	197	196	187	180	183	184	183	227	186	209	194	156	214	173			
Grade 8: Grade 7		1.022	1.000	1.011	0.972	1.021	1.016	0.974	1.006	0.984	1.005	1.000	1.046	1.000	1.005	1.021	1.026	1.029	1.018	1.01	1.02	1.02
Grade 9	117	113	143	174	169	164	185	182	172	179	185	179	178	214	193	207	195	149	206			
Grade 9: Grade 8		0.850	1.021	0.941	0.944	0.932	0.939	0.929	0.920	0.994	1.011	0.973	0.973	0.943	1.038	0.990	1.005	0.955	0.963	0.98	0.99	0.98
Grade 10	139	116	106	143	167	171	155	182	187	170	181	185	177	173	209	185	194	190	149			
Grade 10: Grade 9		0.991	0.938	1.000	0.960	1.012	0.945	0.984	1.027	0.988	1.011	1.000	0.989	0.972	0.977	0.959	0.937	0.974	1.000	0.98	0.97	0.97
Grade 11	111	136	120	106	139	161	164	155	174	184	171	178	182	181	177	212	174	190	181			
Grade 11: Grade 10		0.978	1.034	1.000	0.972	0.964	0.959	1.000	0.956	0.984	1.006	0.983	0.984	1.023	1.014	1.014	0.941	0.979	0.953	0.99	0.98	0.96
Grade 12	93	110	128	120	108	140	160	163	155	177	185	169	175	180	176	178	211	175	191			
Grade 12: Grade 11		0.991	0.941	1.000	1.019	1.007	0.994	0.994	1.000	1.017	1.005	0.988	0.983	0.989	0.972	1.006	0.995	1.006	1.005	1.00	1.00	1.00
Grade K - Grade 3	698	709	720	724	731	700	728	722	683	697	666	662	653	628	622	622	615	599	571	634	606	595
Grade 4 - Grade 8	813	878	932	948	940	963	938	915	930	938	975	976	967	939	927	918	892	903	841	928	896	879
Grade K - Grade 3	698	709	720	724	731	700	728	722	683	697	666	662	653	628	622	622	615	599	571	634	606	595
Grade 4 - Grade 5	358	374	387	390	381	381	371	355	387	393	392	390	349	363	371	359	359	336	316	363	348	337
Grade 6 - Grade 8	455	504	545	558	559	582	567	560	543	545	583	586	618	576	556	559	533	567	525	565	548	542
Grade 9 - Grade 12	460	475	497	543	583	636	664	682	688	710	722	711	712	748	755	782	774	704	727	735	748	735
Grade K - Grade 12	1971	2062	2149	2215	2254	2299	2330	2319	2301	2345	2363	2349	2332	2315	2304	2322	2281	2206	2139	2,296	2,250	2,209

\*\* Birth data is provided by the Department of Public Health and represents actual births by Weston residents for years 1989 through 2010.

**Weston Public Schools**  
Enrollment History (1997-1998 to 2015-2016) and Projection (2016-2017 to 2026-2027)

**Enrollment Report**  
**Table K**

Year		2008	2009	2010	2011	2012	2013	2014	2015	2016	2017	2018	2019	2020	2021
Weston Birth Data	Multiplier	61	80	66	59	60	55	60	60	60	60	60	60	60	60
School Year	3 year ratio	2013/14	2014/15	2015/16	2016/17	2017/18	2018/19	2019/20	2020/21	2021/22	2022/23	2023/24	2024/25	2025/26	2026/27
Grades		Actual													
Grade K	1.72	124	139	127	130	103	94	103	103	103	103	103	103	103	103
Grade 1	1.05	172	126	138	133	136	108	99	108	108	108	108	108	108	108
Grade 2	1.04	164	175	131	143	137	141	112	102	112	112	112	112	112	112
Grade 3	1.00	155	159	175	131	143	137	140	111	102	111	111	111	111	111
Grade 4	1.02	167	162	156	179	133	146	140	143	114	104	114	114	114	114
Grade 5	1.02	192	174	160	159	182	136	148	143	146	116	106	116	116	116
Grade 6	0.98	169	183	174	156	155	178	133	145	140	143	113	104	113	113
Grade 7	0.98	208	170	178	171	154	153	175	131	143	137	141	112	102	112
Grade 8	1.02	156	214	173	182	175	158	157	180	134	146	141	144	114	105
Grade 9	0.98	195	149	206	169	178	171	154	153	175	131	143	137	140	111
Grade 10	0.97	194	190	149	199	163	172	165	149	148	169	127	138	133	136
Grade 11	0.96	174	190	181	143	191	156	165	159	143	142	162	121	132	127
Grade 12	1.00	211	175	191	181	143	191	157	165	159	143	142	163	121	132
<b>Total</b>		<b>2,281</b>	<b>2,206</b>	<b>2,139</b>	<b>2,076</b>	<b>1,994</b>	<b>1,941</b>	<b>1,848</b>	<b>1,791</b>	<b>1,725</b>	<b>1,665</b>	<b>1,622</b>	<b>1,582</b>	<b>1,520</b>	<b>1,500</b>
Country School		327	314	295	268	260	240	227	212	212	217	217	217	217	217
Woodland School		295	308	276	268	260	240	227	212	212	217	217	217	217	217
Field School		359	336	316	338	316	282	288	286	260	220	230	230	230	230
Weston Middle School		533	567	525	510	485	489	465	456	417	427	395	359	330	330
Weston High School		774	704	727	692	675	691	641	625	624	585	573	559	527	507

10 Year Average Enrollment	5 Year Average Enrollment	3 Year Average Enrollment
1.62	1.80	1.72
1.07	1.06	1.05
1.04	1.04	1.04
1.03	1.01	1.00
1.01	1.02	1.02
1.02	1.03	1.02
0.99	0.99	0.98
1.00	0.99	0.98
1.01	1.02	1.02
0.98	0.99	0.98
0.98	0.97	0.97
0.99	0.98	0.96
1.00	1.00	1.00

**Actual and Projected Enrollment by School**  
**SY'13/14 through SY'26/27**

