

# **SEL: Social and Emotional Learning**

School Committee Presentation  
June 18, 2018

Mindfulness Culturally Responsive Teaching

Grit

Growth Mindset

Non-cognitive Skills

Social Justice &  
Equity Education

Executive Function

21st Century Skills

School Climate

Character Education

Soft Skills

# What is SEL?

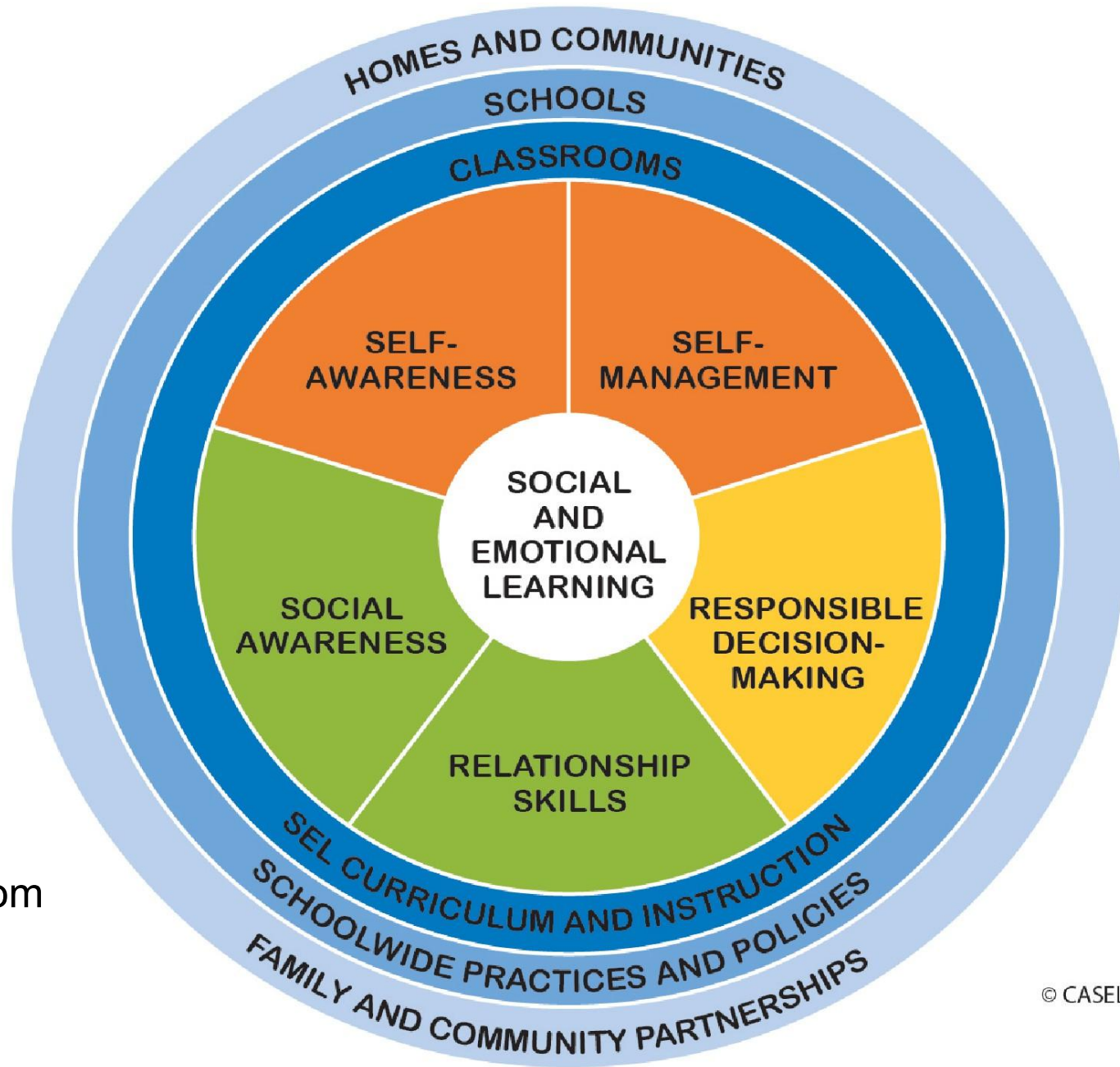
Social and emotional learning (SEL) is the process through which children and adults acquire and effectively apply the knowledge, attitudes, and skills necessary to understand and manage emotions, set and achieve positive goals, feel and show empathy for others, establish and maintain positive relationships, and make responsible decisions.

Collaborative for Academic, Social and Emotional Learning.  
*What is SEL?* Retrieved from <http://www.casel.org/what-is-sel/>



<https://youtu.be/Do1R67Ek0NI>

3:44



## Supports:

- **Programs:**  
*Responsive Classroom, Open Circle, Challenge Success, etc.*
- **DESE**
- **SEL4MA**
- **CASEL**

## Roles:

- Family
- Classroom
- School
- District
- Community

# Approaches to SEL

- **Lessons**
  - Labeling feelings, conflict resolution
- **Practices**
  - Classroom norms/rules, expectations
- **Curricula with embedded SEL**
  - ELA and Math current frameworks; PBL
- **School-wide/District-wide initiatives**

# In Weston, now and moving forward

## Programs

**Elementary:** Open Circle, Responsive Classroom, Social Thinking

**Middle School:** RALI - Relationships, Awareness, Learning, Integrity (Weston-developed)

**High School:** Restorative Practice, Challenge Success

## Practices

DCAP

Later start time

Advisories

Affinity Groups

Lunch Groups

Data collection and analysis: Student Life Survey, Weston Youth Health Survey, SBIRT, Challenge Success Survey

# **In Weston, now and moving forward**

## **Professional Development**

*Open Circle* (ongoing)

*Responsive Classroom* (Summer 2018)

*Challenge Success* (Summer 2017; Fall 2018; Faculty, Families, Students 2018-2019)

Weston Professional Development Academy (WPDAC) (Spring 2018; Fall 2018)

## **Community Engagement**

School-based coffees

Family/Community speakers (Jessica Minihan, Sarah Ward, Rachel Poliner: 2017-2018; Challenge Success speaker: 2018-2019)



# Who supports this work?

## All educators and school personnel

- Teachers
- Paraprofessionals
- Administrative assistants
- Custodians
- Bus drivers
- Cafeteria staff
- Administrators
- Nurses
- Adjustment counselors

## Professionals involved directly in next steps

- District-wide psychologist
- School-based adjustment counselors
- District-wide SEL team (2018-2019)